

Supporting Students with Medical Conditions Policy

DATE ESTABLISHED: Spring 2026

DATE FOR REVIEW: Spring 2029

www.dorothy-stringer.co.uk

Supporting students with Medical Conditions Policy

1. About this policy

This policy is written in line with the requirements of:

- Students and Families Act 2014 - section 100 Supporting students at school with medical conditions: statutory guidance for governing bodies of maintained schools and proprietors of academies in England, DfE Sept 2014 0-25
- SEND Code of Practice, DfE 2014 Mental Health and behaviour in schools: departmental advice for school staff, DfE June 2014
- Equalities Act 2010 Schools Admissions Code, DfE 1 Feb 2010

This policy should be read in conjunction with the following school policies;

- Accessibility plan
- Complaints Policy
- Equality Policy
- First aid
- Health and safety Policy
- Safeguarding policy
- School trips policy
- Special educational needs information report and policy

2. Aims

This policy aims to ensure that:

- Students, staff and parents understand how our school will support students with medical conditions
- Students with medical conditions are properly supported to allow them to access the same education as other students, including school trips and sporting activities

The governing board will implement this policy by:

- Making sure sufficient staff are suitably trained
- Making staff aware of students' conditions, where appropriate
- Making sure there are cover arrangements to ensure someone is always available to support students with medical conditions
- Providing supply teachers with appropriate information about the policy and relevant students
- Developing and monitoring individual healthcare plans (IHCPs)

3. Roles and responsibilities

3.1 The governing board

The governing board has ultimate responsibility to make arrangements to support students with medical conditions. The governing board will ensure that sufficient staff have received suitable training and are competent before they are responsible for supporting children with medical conditions.

3.2 The headteacher

The headteacher will:

- Make sure all staff are aware of this policy and understand their role in its implementation
- Ensure that there is a sufficient number of trained staff available to implement this policy and deliver against all individual healthcare plans (IHCPs), including in contingency and emergency situations
- Ensure that all staff who need to know are aware of a child's condition
- Take overall responsibility for the development of IHCPs
- Make sure that school staff are appropriately insured and aware that they are insured to support students in this way
- Contact the school nursing service in the case of any student who has a medical condition that may require support at school, but who has not yet been brought to the attention of the school nurse
- Ensure that systems are in place for obtaining information about a child's medical needs and that this information is kept up to date

3.3 Staff

Supporting students with medical conditions during school hours is not the sole responsibility of one person. Any member of staff may be asked to provide support to students with medical conditions, although they will not be required to do so. This includes the administration of medicines.

Those staff who take on the responsibility to support students with medical conditions will receive sufficient and suitable training and will achieve the necessary level of competency before doing so.

Teachers will take into account the needs of students with medical conditions that they teach. All staff will know what to do and respond accordingly when they become aware that a student with a medical condition needs help.

3.4 Parents

Parent/Carers will:

- Provide the school with sufficient and up-to-date information about their child's medical needs
- Be involved in the development and review of their child's IHCP and may be involved in its drafting
- Carry out any action they have agreed to as part of the implementation of the IHCP, e.g. provide medicines and equipment, and ensure they or another nominated adult are contactable at all times

3.5 Students

Students with medical conditions will often be best placed to provide information about how their condition affects them. Students should be fully involved in discussions about their medical support needs and contribute as much as possible to the development of their IHCPs. They are also expected to comply with their IHCPs.

3.6 School nurses and other healthcare professionals

Our school nursing service or allied healthcare professionals will notify the school when a student has been identified as having a medical condition that will require support in school. This will be before the student starts school, wherever possible. They may also support staff to implement a child's IHCP.

Healthcare professionals, such as GPs and paediatricians, will liaise with the school's nurses and notify them of any students identified as having a medical condition. They may also provide advice on developing IHCPs

4. Equal Opportunities

Our school is clear about the need to actively support students with medical conditions to participate in school trips and visits, or in sporting activities, and not prevent them from doing so.

The school will consider what reasonable adjustments need to be made to enable these students to participate fully and safely on school trips, visits and sporting activities.

Risk assessments will be carried out so that planning arrangements take account of any steps needed to ensure that students with medical conditions are included. In doing so, students, their parents and any relevant healthcare professionals will be consulted.

5. Procedure to be followed when notified a child has a medical condition

When the school is notified that a student has a medical condition, the process outlined below will be followed to decide whether the student requires an IHCP.

The school will make every effort to ensure that arrangements are put into place within 2 weeks, or by the beginning of the relevant term for students who are new to our school.

(See Appendix 1).

6. Individual Healthcare Plans

The headteacher has overall responsibility for the development of IHCPs for students with medical conditions. This has been delegated to the SENCo to oversee.

Plans will be reviewed at least annually, or earlier if there is evidence that the student's needs have changed.

Plans will be developed with the student's best interests in mind and will set out:

- What needs to be done

- When
- By whom

Not all students with a medical condition will require an IHCP. It will be agreed with a healthcare professional and the parent/carer when an IHCP would be inappropriate or disproportionate. This will be based on evidence. If there is no consensus, the SENCo will make the final decision.

Plans will be drawn up in partnership with the school, parent/carers and a relevant healthcare professional, such as the school nurse, specialist or paediatrician, who can best advise on the student's specific needs. The student will be involved wherever appropriate.

IHCPs will be linked to, or become part of, any education, health and care (EHC) plan. If a student has SEN but does not have an EHC plan, the SEN will be mentioned in the IHCP.

The level of detail in the plan will depend on the complexity of the child's condition and how much support is needed. The governing board and SENCo will consider the following when deciding what information to record on IHCPs:

- The medical condition, its triggers, signs, symptoms and treatments
- The student's resulting needs, including medication (dose, side effects and storage) and other treatments, time, facilities, equipment, testing, access to food and drink where this is used to manage their condition, dietary requirements and environmental issues, e.g. crowded corridors, travel time between lessons
- Specific support for the student's educational, social and emotional needs. For example, how absences will be managed, requirements for extra time to complete exams, use of rest periods or additional support in catching up with lessons, counselling sessions
- The level of support needed, including in emergencies. If a student is self-managing their medication, this will be clearly stated with appropriate arrangements for monitoring
- Who will provide this support, their training needs, expectations of their role and confirmation of proficiency to provide support for the student's medical condition from a healthcare professional, and cover arrangements for when they are unavailable
- Who in the school needs to be aware of the student's condition and the support required
- Arrangements for written permission from parents and the headteacher for medication to be administered by a member of staff, or self-administered by the student during school hours
- Separate arrangements or procedures required for school trips or other school activities outside of the normal school timetable that will ensure the student can participate, e.g. risk assessments
- Where confidentiality issues are raised by the parent/student, the designated individuals to be entrusted with information about the student's condition
- What to do in an emergency, including who to contact, and contingency arrangements. A personal evacuation plan (PEP) will be written where additional arrangements to keep the student safe and assist with evacuation are required
- Where a student uses home-to-school transport arranged by the LA and they also have a medical condition which is life-threatening, we will share the student's Individual Healthcare Plan with the local authority.

7. Staff training and support

Staff who are responsible for supporting students with medical needs will receive suitable and sufficient training to do so.

The training will be identified during the development or review of IHPs. Staff who provide support to students with medical conditions will be included in meetings where this is discussed.

The relevant healthcare professionals will lead on identifying the type and level of training required and will agree this with the SENCo. Training will be kept up to date.

Training will:

- Be sufficient to ensure that staff are competent and have confidence in their ability to support the students
- Fulfil the requirements in the IHCPs
- Help staff to have an understanding of the specific medical conditions they are being asked to deal with, their implications and preventative measures

Healthcare professionals will provide confirmation of the proficiency of staff in a medical procedure, or in providing medication.

All staff will receive training so that they are aware of this policy and understand their role in implementing it, for example, with preventative and emergency measures so they can recognise and act quickly when a problem occurs. This will be provided for new staff during their induction.

8. Managing medicines on school premises and record keeping

Prescription and non-prescription medicines will only be administered at school:

- When it would be detrimental to the student's health or school attendance not to do so **and**
- Where we have parents' written consent

The only exception to this is where the medicine has been prescribed to the student without the knowledge of the parents.

Students under 16 will not be given medicine containing aspirin unless prescribed by a doctor.

Anyone giving a student any medication (for example, for pain relief) will first check maximum dosages and when the previous dosage was taken. Parent/carers will always be informed.

The school will only accept prescribed medicines that are:

- In-date
- Labelled
- Provided in the original container, as dispensed by the pharmacist, and include instructions for administration, dosage and storage

The school will accept insulin that is inside an insulin pen or pump rather than its original container, but it must be in date.

All medicines will be stored safely. Students will be informed about where their medicines are at all times and be able to access them immediately via the medical officer / member of staff covering first aid. Medicines and devices such as asthma inhalers, blood glucose testing meters and adrenaline pens will always be readily available to students, stored safely and not locked away.

Medicines will be returned to parents to arrange for safe disposal when no longer required.

8.1 Controlled drugs

[Controlled drugs](#) are prescription medicines that are controlled under the [Misuse of Drugs Regulations 2001](#) and subsequent amendments, such as morphine or methadone.

A student who has been prescribed a controlled drug may have it in their possession if they are competent to do so, but they must not pass it to another student to use. All other controlled drugs are kept in a secure cupboard in the school office and only named staff have access.

Controlled drugs will be easily accessible in an emergency and a record of any doses used and the amount held will be kept.

8.2 Students managing their own needs

Students who are competent will be encouraged to take responsibility for managing their own medicines and procedures. This will be discussed with parent/carers and it will be reflected in their IHCPs.

Students will be allowed to carry their own medicines and relevant devices wherever possible. Staff will not force a student to take a medicine or carry out a necessary procedure if they refuse, but will follow the procedure agreed in the IHP and inform parent/carers so that an alternative option can be considered, if necessary.

8.3 Unacceptable practice

School staff SHOULD use their discretion and judge each case individually with reference to the student's IHCP, but it is generally not acceptable to:

- Prevent students from easily accessing their inhalers and medication, and administering their medication when and where necessary
- Assume that every student with the same condition requires the same treatment
- Ignore the views of the student or their parent/carers
- Ignore medical evidence or opinion (although this may be challenged)
- Send children with medical conditions home frequently for reasons associated with their medical condition or prevent them from staying for normal school activities, including lunch, unless this is specified in their IHCPs
- If the student becomes ill, send them to the school office or medical room unaccompanied or with someone unsuitable
- Penalise students for their attendance record if their absences are related to their medical condition, e.g. hospital appointments
- Prevent students from drinking, eating or taking toilet or other breaks whenever they need to in order to manage their medical condition effectively

- Require parent/carers, or otherwise make them feel obliged, to attend school to administer medication or provide medical support to their student, including with toileting issues. No parent/carer should have to give up working because the school is failing to support their child's medical needs
- Prevent students from participating, or create unnecessary barriers to students participating in any aspect of school life, including school trips, e.g. by requiring parents to accompany their child
- Administer, or ask students to administer, medicine in school toilets

9. Emergency procedures

Staff will follow the school's normal emergency procedures (for example, calling 999). All students' IHCPs will clearly set out what constitutes an emergency and will explain what to do.

If a student needs to be taken to hospital, staff will stay with the student until the parent/carer arrives, or accompany the student to hospital by ambulance. In the rare exception that a member of staff is unable to accompany the student, and permission has been short and given by parent/carers, the child can travel unaccompanied in the Ambulance and be met by parent/carers at the hospital or clinic.

10. Day trips, residential visits and sporting activities

We will actively support students with medical condition to participate in day trips, residential visits and sporting activities by being flexible and making reasonable adjustments unless there is evidence from a clinician such as a GP that this is not possible.

We will always conduct a risk assessment so that planning arrangements take account of any steps needed to ensure that students with medical conditions can be included safely. This will involve consultation with parents/carers and relevant healthcare professions and will be informed by Health and Safety Executive (HSE) guidance on school trips.

IHCPs and medication when appropriate, will be shared with the member of staff responsible for the off-site trip or sports fixture/. The medical officer will liaise with the member of staff responsible.

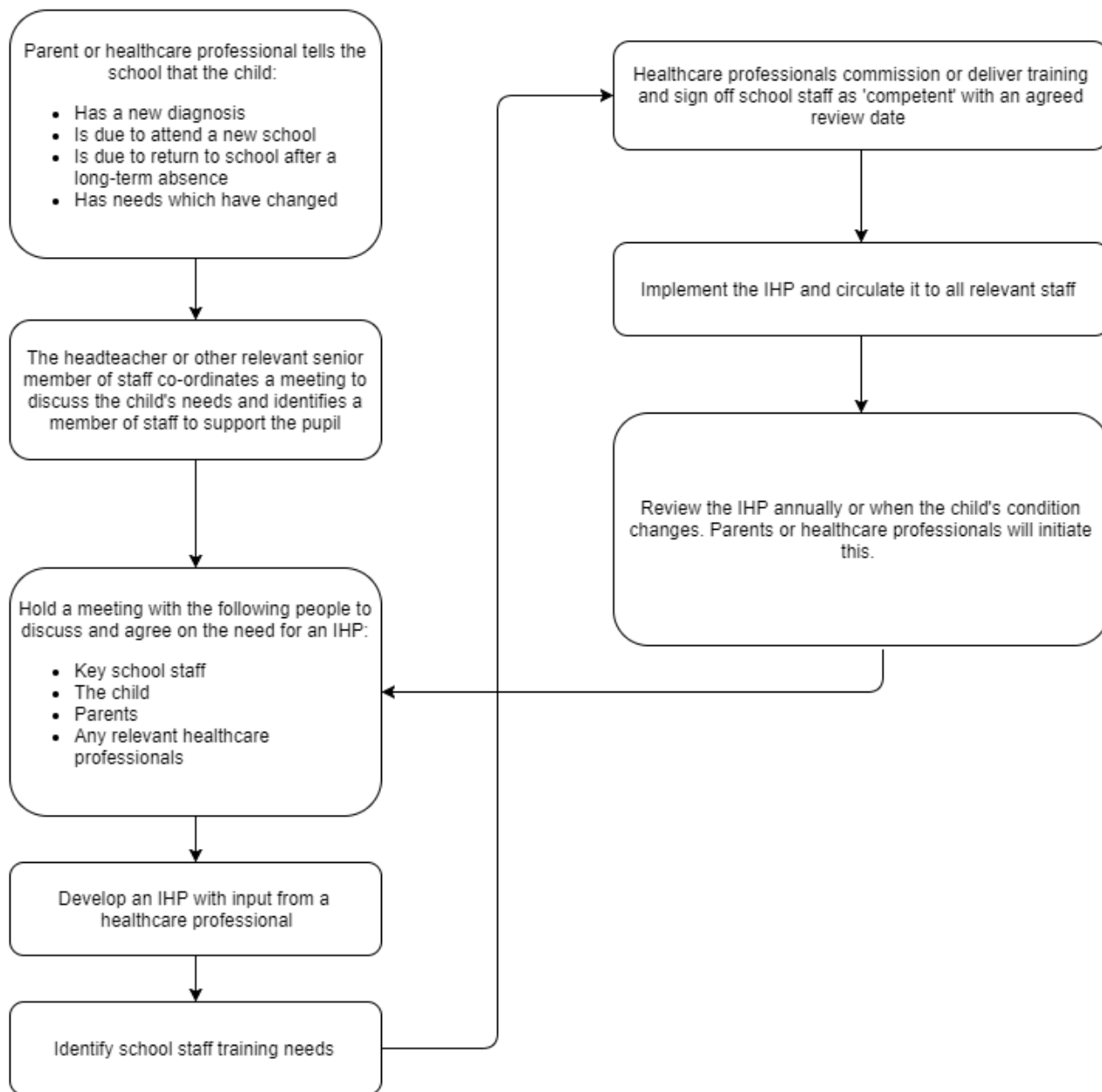
11. Liability and indemnity

The Governing Body of Dorothy Stringer School ensures that an appropriate level of insurance is in place and reflects the level of risk presented by students with medical conditions.

12. Complaints

Should parents/carers be unhappy with any aspect of their child's care at Dorothy Stringer School, they must discuss their concerns with the school. This will be with the student's Form Tutor in the first instance, with whom any issues should be addressed. If this does not resolve the problem or allay the concern, the matter should be brought to the Pastoral team for the relevant Year group (Pastoral manager or Head of Year).

Appendix A: Model process for developing Individual Healthcare Plans



Template A: Individual Health Care Plan (IHCP) for a Student with Medical & Mental Health Needs

https://www.gov.uk/government/uploads/system/uploads/attachment_data/file/306952/Statutory_guidance_on_supporting_students_at_school_with_medical_conditions.pdf

Name:

Address:

Date of Birth:

Name of School:

Class/Form:

Medical Condition:

Date plan drawn up:

Review date:

CONTACT INFORMATION

Family Contact 1

Name:

Phone No:

(work):

(home):

(mobile):

Relationship:

Family Contact 2

Name:

Phone No:

(work):

(home):

(mobile):

Relationship:

GP

Name:

Phone No:

Clinic/Hospital Contact

Name:

Phone No:

Describe medical / mental health condition and give details of student's individual symptoms:

Medication

Daily care requirements (e.g. before sport/at lunchtime):

Prescribed and Non-prescribed medication information

Medication 1

Medication Name	
Dose of medication e.g. 1 tablet twice a day	
Storage requirements (Fridge/cupboard):	
Patient Information Leaflet enclosed (please circle)	

Medication 2

Medication Name	
Dose of medication e.g. 1 tablet twice a day	
Storage requirements (Fridge/cupboard):	
Patient Information Leaflet enclosed (please circle)	

Medication 3

Medication Name	
Dose of medication e.g. 1 tablet twice a day	
Storage requirements (Fridge/cupboard):	
Patient Information Leaflet enclosed (please circle)	

Describe what constitutes an emergency for the student, and the action to be taken if this occurs:

Follow up care:

Who is responsible in an emergency (State if different on off-site activities)

Signed:

Health representative (if available)..... Date.....

Parent/carer

Date

Head teacher

Date

SENCo

Date: